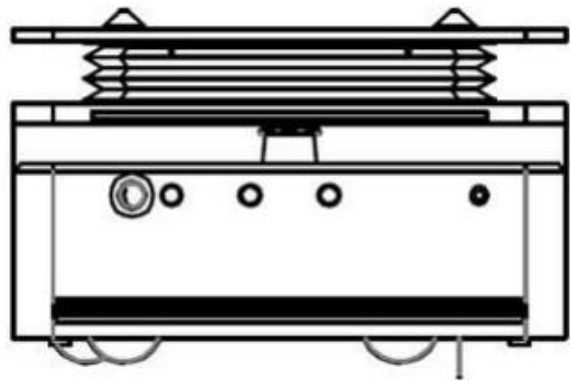
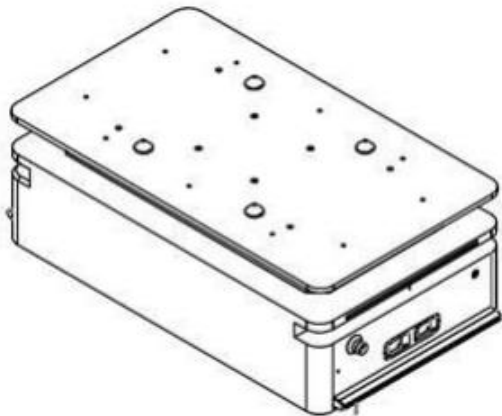
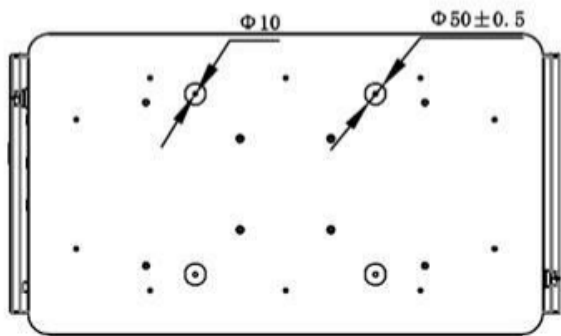
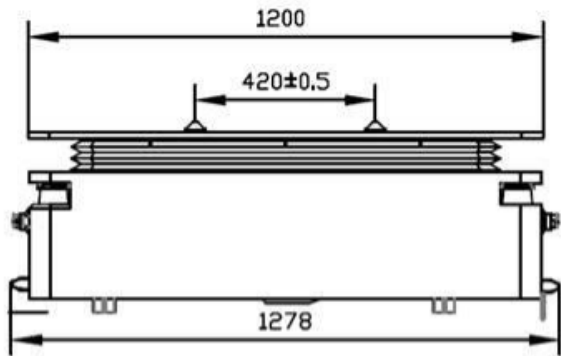
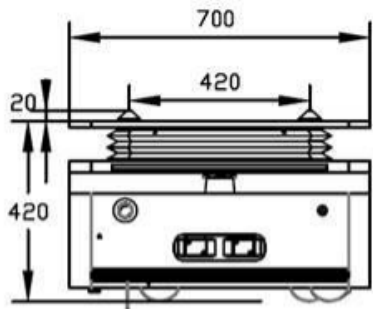


Under Ride Lifting Robot R1000LT

INS + Lidar Slam Navigation + 1000 loading



Dimensional



| Specification | |
|---|---|
| Basic specification | |
| Name | Under Ride Lifting Robot R1000LT |
| Rated load | 1000 Kg |
| Self-weight | 260 Kg (±10 Kg) |
| Positioning accuracy | ±10 mm |
| Jacking height | 60 mm |
| Dimension (L x W x H) | 1280 x 800 x 420 mm (excluding anti-collision strip) |
| Moving performance | |
| Driving mode | Servo motor / two-wheel differential drive |
| control mode | Manual/Automatic |
| Form of motion | Horizontal linear motion |
| Unloading max Operating speed | 1.7m/s |
| Full load Operating speed | 0.8m/s |
| Jacking time | ≤10s |
| Orientation accuracy | ±0.5° |
| Acceleration time (no load) | 3S |
| Acceleration time (full load) | 5S |
| Body rotation speed (90 degrees) | ≤1.5s |
| Body rotation speed (180 degrees) | ≤3/s |
| Orientation accuracy | ±0.5° |
| Acceleration time (no load) | 3S |
| Battery performance | |
| Driving voltage | DC48V |
| Battery capacity | 40Ah |
| Battery type | Lithium iron phosphate |
| Battery life | 1500 cycles, capacity ≥ 80% |
| Endurance time | More than 8h |
| Charging time | ≤1.5h |
| Charging mode (optional) | Off line charging / automatic charging |
| Safety protection | |
| Anti-collision mode | Lidar obstacle avoidance |
| | Ultrasonic obstacle avoidance / infrared obstacle avoidance |
| | Front and rear crash strips to avoid obstacles |
| Ultrasonic obstacle avoidance / infrared obstacle avoidance | Front and rear emergency stop buttons |