

CATALOG AMRs

APPLICATION SCENARIOS: WAREHOUSE AUTOMATION, SMART FACTORY, MEDICINE, LOGISTICS, ETC.



R3 SERIES

(NON-CE PLATFORM)



Model	R300LTR	R600LTR-B	R3-1000H	R1000LTR	R1500LTR-B
Weight	150 Kg (±10 Kg)	180 Kg (±10 Kg)	172 Kg (±10 Kg)	250 Kg (±10 Kg)	283 Kg (±10 Kg)
Payload	300 Kg	600/1000 Kg	1000 Kg	1000 Kg	1500 Kg
Dimension(LxWxH)	792 x 580 x 250 mm	950 x 650 x 250 mm	1150 x 820 x 254 mm	1224 x 730 x 440 mm	1210 x 892 x 277 mm
Lifting Height	60 mm±2	60 mm±2	60 mm±2	60 mm±2	60 mm±2
Navigation Type	LIDAR SLAM	LIDAR SLAM	LIDAR SLAM	LIDAR SLAM	LIDAR SLAM
Driving Method	Differential drive	Differential drive	Differential drive	Differential drive	Differential drive
Position Accuracy	±10 mm	±10 mm	±10 mm	±10 mm	±10 mm
Angle Accuracy	±1°	±1°	±1°	±1°	±1°
Max Speed	≤1.5 m/s	≤1.5 m/s	≤1.5 m/s	≤1.5 m/s	≤2 m/s
Battery Type	DC48V 20Ah (LifePO4)	DC48V 24Ah (LifePO4)	DC48V 27Ah (LifePO4)	DC48V 40Ah (LifePO4)	DC48V 40Ah (LifePO4)
Working Time	8 hr.	8 hr.	8 hr.	8 hr.	8 hr.
Charging Time	≤2 hr.	≤2 hr.	≤2 hr.	≤1-1.5 hr.	≤2 hr.
Charging Method	Automatic / Manual	Automatic / Manual	Automatic / Manual	Automatic / Manual	Automatic / Manual
LIDAR	✓	✓	✓	✓	✓
Status Light	✓	✓	✓	✓	✓
Emergency stop	✓	✓	✓	✓	✓
Wireless API	Wi-Fi / 5G Open API	Wi-Fi / 5G Open API	Wi-Fi / 5G Open API	Wi-Fi / 5G Open API	Wi-Fi / 5G Open API

R5 SERIES

(NON-CE PLATFORM)



Model	R5-300DL	R5-500DL	R5-1000DL	R6-600DS	R5-1500DL
Weight	180 Kg (±10 Kg)	245 Kg (±10 Kg)	265 Kg (±10 Kg)	320 Kg (±10 Kg)	375 Kg (±10 Kg)
Payload	300 Kg	500 Kg	1000 Kg	600 Kg	1500 Kg
Dimension(LxWxH)	792 x 580 x 330 mm	1120 x 722 x 250 mm	1330 x 952 x 290 mm	1276 x 540 x 360 mm	1330 X 952 X 420 mm
Lifting Height	60 mm±2	60 mm±2	60 mm±2	60 mm±2	60 mm±2
Navigation Type	LIDAR SLAM	LIDAR SLAM	LIDAR SLAM	LIDAR SLAM	LIDAR SLAM
Driving Method	Differential drive	Differential drive	Differential drive	Omnidirectional	Differential drive
Position Accuracy	±10 mm	±10 mm	±10 mm	±10 mm	±10 mm
Angle Accuracy	±1°	±1°	±1°	±1°	±1°
Max Speed	≤1.5 m/s	≤1.5 m/s	≤1.5 m/s	≤1.5 m/s	≤1.5 m/s
Battery Type	DC48V 20Ah (LifePO4)	DC48V 23Ah (LifePO4)	DC48V 40Ah (LifePO4)	DC48V 30Ah (LifePO4)	DC48V 40Ah (LifePO4)
Working Time	8 hr.	8 hr.	8 hr.	8 hr.	8 hr.
Charging Time	≤2 hr.	≤2 hr.	≤2 hr.	≤2 hr.	≤2 hr.
Charging Method	Automatic / Manual	Automatic / Manual	Automatic / Manual	Automatic / Manual	Automatic / Manual
LIDAR	✓	✓	✓	✓	✓
Status Light	✓	✓	✓	✓	✓
Emergency stop	✓	✓	✓	✓	✓
Wireless API	Wi-Fi / 5G Open API	Wi-Fi / 5G Open API	Wi-Fi / 5G Open API	Wi-Fi / 5G Open API	Wi-Fi / 5G Open API

R6 SERIES

(NON-CE PLATFORM)



Model

R6-600MB

R6-2000DS

R6-3000DS

R6-5000DS

Weight
Payload
Dimension(LxWxH)
Lifting Height
Navigation Type

280 Kg (± 10 Kg)
600 Kg
1680 x 686 x 300 mm
N/A
LIDAR SLAM

700 Kg (+10 Kg)
2000 Kg
1980 x 980 x 510 mm
700 mm ± 2
LIDAR SLAM

850 Kg (+10 Kg)
3000 Kg
1430 x 1070 x 510 mm
140 mm ± 2
LIDAR SLAM

1100 Kg (+10 Kg)
5000 Kg
2470 x 1520 x 450 mm
110 mm ± 2
LIDAR SLAM

Driving Method
Position Accuracy
Angle Accuracy
Max Speed

Omnidirectional
 ± 10 mm
 $\pm 1^\circ$
 ≤ 1.5 m/s

Omnidirectional
 ± 10 mm
 $\pm 1^\circ$
 ≤ 1.2 m/s

Omnidirectional
 ± 10 mm
 $\pm 1^\circ$
 ≤ 1.2 m/s

Omnidirectional
 ± 10 mm
 $\pm 1^\circ$
 ≤ 0.75 m/s

Battery Type
Working Time
Charging Time
Charging Method

DC48V 96Ah (LifePO4)
8 hr.
 ≤ 2 hr.
Automatic / Manual

DC48V 105Ah (LifePO4)
6 hr.
 ≤ 2 hr.
Automatic / Manual

DC48V 105Ah (LifePO4)
6 hr.
 ≤ 2 hr.
Automatic / Manual

DC48V 120Ah (LifePO4)
6 hr.
 ≤ 2.5 hr.
Automatic / Manual

LIDAR
Status Light
Emergency stop

✓
✓
✓

✓
✓
✓

✓
✓
✓

✓
✓
✓

Wireless
API

Wi-Fi / 5G
Open API

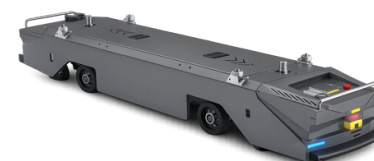
Wi-Fi/5G
Open API

Wi-Fi/5G
Open API

Wi-Fi/5G
Open API

TOWING SERIES

(NON-CE PLATFORM)



Model

R300TW

R500TW

R500PU

R1500TW

R3000TW-CB

Weight
Payload
Dimension(LxWxH)
Lifting Height
Navigation Type
Driving Method
Position Accuracy
Angle Accuracy
Max Speed

150 Kg (± 10 Kg)
300 Kg
817 x 595 x 1349 mm
N/A
LIDAR SLAM
Differential drive
 ± 5 mm
 $\pm 1^\circ$
 ≤ 1.5 m/s

260 Kg (± 10 Kg)
500/700/1000/2000 Kg
1205 X 784 X 1367 mm
N/A
LIDAR SLAM
Differential drive
 ± 10 mm
 $\pm 1^\circ$
 ≤ 1.2 m/s

185 Kg (+10 Kg)
500 Kg
1076 x 612 x 343 mm
N/A
LIDAR SLAM
Differential drive
 ± 10 mm
 $\pm 1^\circ$
 ≤ 1.2 m/s

417 Kg (+10 Kg)
1500 Kg
2280 x 500 x 330 mm
N/A
LIDAR SLAM/Magnetic Tape
Differential drive
 ± 10 mm
 $\pm 1^\circ$
 ≤ 0.6 m/s

58 Kg (Battery)
3000 Kg
1720 x 1060 x 1966.5 mm
N/A
LIDAR SLAM
Differential drive
 ± 10 mm
 $\pm 1^\circ$
 ≤ 1.2 m/s

Battery Type
Working Time
Charging Time
Charging Method

DC51.2V 23Ah (LifePO4)
8 hr.
 ≤ 1 hr.
Automatic / Manual

DC48V 40Ah (LifePO4)
8 hr.
 ≤ 1.5 hr.
Automatic / Manual

DC48V 40Ah (LifePO4)
8 hr.
 ≤ 1.5 hr.
Automatic / Manual

DC48V 50Ah (LifePO4)
6-8 hr.
 $\leq 1-2$ hr.
Automatic

DC24V 210Ah (LifePO4)
6-8 hr.
 ≤ 1.2 hr.
Automatic / Manual

LIDAR
Status Light
Emergency stop

✓
✓
✓

✓
✓
✓

✓
✓
✓

✓
✓
✓

✓
✓
✓

Wireless
API

Wi-Fi / 5G
Open API

Wi-Fi / 5G
Open API

Wi-Fi/5G
Open API

Wi-Fi/5G
Open API

Wi-Fi/5G
Open API

CUSTOMIZED SERIES

(NON-CE PLATFORM)



Model	R100TR	R150TR	R1000DS-TR	R3000DS-TR	R5000DS-TR
Weight	120 Kg (±5 Kg)	180 Kg (±10 Kg)	980 Kg (±5 Kg)	1100 Kg (±20 Kg)	1300 Kg (±20 Kg)
Payload	100 Kg	150 Kg	1000 kg	3000 kg	5000 Kg
Dimension(LxWxH)	1235 x 1000 x 942 mm	890 x 712 x 725 mm	2694 x 1932 x 635 mm	2780 x 900 x 650 mm	3580 x 2280 x 650 mm
Lifting Height	N/A	N/A	N/A	N/A	N/A
Navigation Type	LIDAR SLAM	LIDAR SLAM	LIDAR SLAM	LIDAR SLAM	LIDAR SLAM
Driving Method	Differential drive	Differential drive	Omnidirectional	Omnidirectional	Omnidirectional
Position Accuracy	±10 mm	±10 mm	±10 mm	±10 mm	±10 mm
Angle Accuracy	±1°	±1°	±1°	±1°	±1°
Max Speed	≤1.5 m/s	≤1.7 m/s	≤1.2 m/s	≤1.2 m/s	≤0.75 m/s
Battery Type	DC48V 30Ah (LifePO4)	DC48V 30Ah (LifePO4)	DC48V/40Ah (LifePO4)	DC48V / 60Ah (LifePO4)	DC48V 180Ah (LifePO4)
Working Time	8 hr.	8 hr.	6-8 hr.	6-8 hr.	6-8 hr.
Charging Time	≤1.5 hr.	≤1.5 hr.	≤1.5 hr.	≤1.5 hr.	≤1.5 hr.
Charging Method	Automatic / Manual	Automatic / Manual	Automatic / Manual	Automatic / Manual	Automatic / Manual
LIDAR	✓	✓	✓	✓	✓
Status Light	✓	✓	✓	✓	✓
Emergency stop	✓	✓	✓	✓	✓
Wireless API	Wi-Fi / 5G Open API	Wi-Fi/5G Open API	Wi-Fi/5G Open API	Wi-Fi/5G Open API	Wi-Fi/5G Open API

FMR SERIES

(NON-CE PLATFORM)



Model

R300F-L

R500F-L

R500F-LH05

R2000F-LCB

R1000APL

Weight	210 Kg (±10 Kg)	210 Kg	680 Kg (±10 Kg)	500 Kg (±10 Kg)	430 Kg (±10 Kg)
Payload	300 Kg	500 Kg	500 Kg	2000 Kg	1000/1200/1500 Kg
Dimension(LxWxH)	1366 x 590 x 1676 mm	1585 x 885 x 1836 mm	1484 x 1067 x 1997 mm	1838 x 884 x 2025 mm	1450 x 1200 x 556 mm
Fork Size (LxW)	800 x 300 mm/ Customized	186 x 60 mm/ Customized	900 x 300 mm/ Customized	1200 x 180 mm	N/A
Lifting Height	70 mm ±5-90 mm ±5	174 mm	500 mm	180 mm	210 mm
Navigation Type	LIDAR SLAM	LIDAR SLAM	LIDAR SLAM	LIDAR SLAM	LIDAR SLAM
Driving Method	Steering wheel	Steering wheel	Steering wheel	Steering wheel	Differential drive
Position Accuracy	±10mm	+10 mm	±10 mm	±10 mm	±10 mm
Angle Accuracy	±1°	±1°	±1°	±1°	±0.5°
Max Speed	≤1.4 m/s	≤1.5 m/s	≤1.5 m/s	≤1.5 m/s	≤1.1 m/s
Battery Type	DC48V 23Ah (LifePO4)	DC48V 35Ah (LifePO4)	DC24V 210Ah (LifePO4)	DC24V 210Ah (LifePO4)	DC48V 36Ah (LiFePO4)
Working Time	8 hr.	≥ 8 hr.	8 hr.	8 hr.	6-8 hr.
Charging Time	≤1.5 hr.	2 hr.	≤2 hr.	≤2 hr.	≤2 hr.
Charging Method	Automatic / Manual	Automatic/ Manual	Automatic / Manual	Automatic / Manual	Automatic / Manual
LIDAR	✓	✓	✓	✓	✓
Status Light	✓	✓	✓	✓	✓
Emergency stop	✓	✓	✓	✓	✓
Wireless Carry Type	Wi-Fi / 5G Dolly / Shelf	Wi-Fi/5G Closed Pallet	Wi-Fi/5G Dolly / Shelf	Wi-Fi/5G Dolly / Shelf	Wi-Fi/5G Open / Closed Pallet

FMR SERIES

(NON-CE PLATFORM)



Model

R1400-LH30-M

R1400F-LH

R1500F-CBD

R1500F-CBH24

R2000F-CBH30

Weight
Payload
Dimension(LxWxH)
Fork Size (LxW)
Lifting Height
Navigation Type

Driving Method
Position Accuracy
Angle Accuracy
Max Speed

Battery Type
Working Time
Charging Time
Charging Method

LIDAR
Status Light
Emergency stop

Wireless
Carry Type

1890 kg
1400 kg
2264 x 1184 x 2172 mm
1220 x 120 mm/ Customized
3000 mm
LIDAR SLAM

Steering wheel
±10mm
±0.5°
≤1.5m/s

DC24V 180Ah (LifePO4)
10 hr.
2 hr.
Automatic / Manual

✓
✓
✓

Wi-Fi / 5G
Open/Closed Pallet

680 Kg (±10 Kg)
1400 Kg
1766 x 980 x 2045 mm
1150 x 180 mm
1600/3000 mm
LIDAR SLAM

Steering wheel
±10 mm
±1°
≤1.5 m/s

DC24V 210Ah (LifePO4)
8 hr.
≤2 hr.
Automatic / Manual

✓
✓
✓

Wi-Fi/5G
Shelf/Dolly/Closed Pallet

388 kg
1500 kg
1644 x 932 x 1991 mm
1150 x 170 mm/ Customized
120 mm
LIDAR SLAM

Steering wheel
±10 mm
±1°
≤2 m/s

DC248V 23Ah (LifePO4)
6-8 hr.
≤1 hr.
Automatic / Manual

✓
✓
✓

Wi-Fi/5G
3-Stringer Pallet

2325 kg
1500 kg
2520 x 1187 x 2326 mm
950 x 100 mm
3300 mm
LIDAR SLAM

Steering wheel
±10 mm
±0.5°
≤1.38 m/s

DC24V 250Ah (LifePO4)
10 hr.
≤2.5 hr.
Automatic / Manual

✓
✓
✓

Wi-Fi/5G
Open/Closed Pallet

2675 kg
2000 Kg
2767 x 1180 x 2235 mm
1070 x 122 mm
3000 mm
LIDAR SLAM

Steering wheel
±10 mm
±1°
≤1.5 m/s

DC24V 200Ah (LifePO4)
6-8 hr.
≤2 hr.
Automatic / Manual

✓
✓
✓

Wi-Fi/5G
Open/Closed Pallet

HUMANOID SERIES

(NON-CE PLATFORM)



Model

R100CB-H

R300CB-H

R350CB-H

R600CB

R600CB-A

Weight
Payload
Dimension(LxWxH)
Lifting Height
Navigation Type

185 Kg (±10 Kg)
100 Kg
890 x 712 x 800 mm
N/A
LIDAR SLAM

150 Kg (±10 Kg)
300 Kg
792 x 620 x 874 mm
N/A
LIDAR SLAM

300 Kg (±10 Kg)
350 kg
1130 x 730 x 1000 mm
N/A
LIDAR SLAM

220 Kg (±10 Kg)
600 kg
890 x 712 x 630 mm
N/A
LIDAR SLAM

200 Kg (±10 Kg)
600 Kg
1235 x 835 x 475 mm
N/A
LIDAR SLAM

Driving Method
Position Accuracy
Angle Accuracy
Max Speed

Differential drive
±10 mm
±1°
≤1.5 m/s

Differential drive
±10 mm
±1°
≤1.5 m/s

Differential drive
±10 mm
±0.5°
≤1.5 m/s

Differential drive
±10 mm
±1°
≤1.5 m/s

Omnidirectional
±10 mm
±1°
≤1.5 m/s

Battery Type
Working Time
Charging Time
Charging Method

DC48V 40Ah (LifePO4)
6 hr.
≤2 hr.
Automatic / Manual

DC48V 68Ah (LifePO4)
6 hr.
≤2 hr.
Automatic / Manual

DC48V 40Ah (LifePO4)
6 hr.
≤2 hr.
Automatic / Manual

DC48V 40Ah (LifePO4)
6 hr.
≤2 hr.
Automatic / Manual

DC48V 40Ah (LifePO4)
6 hr.
≤2 hr.
Automatic / Manual

LIDAR
Status Light
Emergency stop

✓
✓
✓

✓
✓
✓

✓
✓
✓

✓
✓
✓

✓
✓
✓

Wireless
API

Wi-Fi/5G
Open API

Wi-Fi / 5G
Open API

Wi-Fi/5G
Open API

Wi-Fi/5G
Open API

Wi-Fi/5G
Open API

DIE AND MOLD TRANSFER SERIES

(NON-CE PLATFORM)



Model	R3-10T	R3-15T	R3-20T	R3-40T	R3-50T
Weight	N/A	N/A	N/A	N/A	N/A
Payload	10 Tons	20 Tons	30 Tons	50 Tons	60 Tons
Dimension(LxWxH)	4500 x 2500 x 900 mm (to be determined during countersignature)				
Lifting Height	N/A	N/A	N/A	N/A	N/A
Navigation Type	LIDAR SLAM	LIDAR SLAM	LIDAR SLAM	LIDAR SLAM	LIDAR SLAM
Walking direction	Forward, backward, turn, and rotate 360 degrees in place				
Position Accuracy	±20 mm	±20 mm	±20 mm	±20 mm	±20 mm
Angle Accuracy	±3°	±3°	±3°	±3°	±3°
Max Speed	0.5 m/s	0.5 m/s	0.5 m/s	0.5 m/s	0.5 m/s
Battery Type	LifePO4	LifePO4	LifePO4	LifePO4	LifePO4
Battery capacity	DC48V 200Ah	DC48V 400Ah	DC48V 400Ah	DC48V 800Ah	DC48V 800Ah
range	≥ 2000 m	≥ 2000 m	≥ 2000 m	≥ 2000 m	≥ 2000 m
Charging Time		2-3 hr. the workshop power parameters require AC380V ± 10%, 50HZ ± 2HZ			
Charging Method	Manual	Manual	Manual	Manual	Manual
braking distancel	Normally, at a speed of 30m/min Under full load condition, braking distance ≤ 1.5m				